



Term Dates:

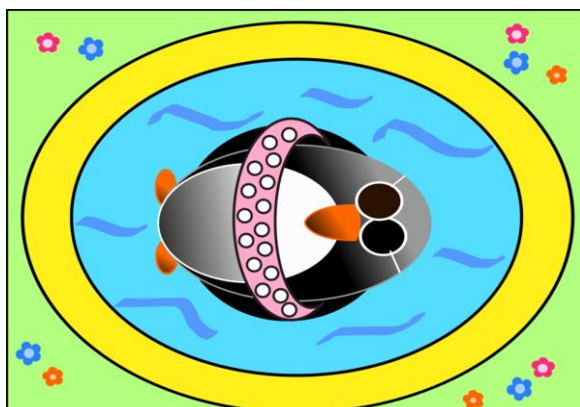
Term 4: Tues 10 Oct - Fri 15 Dec

Term 4 Tuesday 10 th October – Friday 15 th December, 2017		
Date	Time	What's On
Week 7		
21/11/17	2.15pm, Terrey Hills Swim School	Last Swimming for Groups 1 & 3 – Survival Skills
22/11/17	11.30am, Terrey Hills Swim School	Last Swimming begins for Group 2 – Survival Skills
23/11/17	3.15pm, Preschool	Parent Information Afternoon
24/11/17	All day	Group 3 Excursion to Currumbena School
Week 8 onwards		
28/11/17	All day, Preschool	Eyesight Screening
30/11/17	9.30am, Hall	Violin Concert, ALL invited
01/12/17	All day, Preschool	Eyesight Screening
01/12/17	All day	Group 2 Excursion to Art Gallery of NSW *helpers needed
05/12/17	9.00 – 10.30am Primary	Kids Christmas Market – all welcome
07/12/17	9.30am, Start in Primary	Transitioners & Group 1 Bushwalk
08/12/17	12.15pm, Hall	Group 3 Play
09/12/17	4pm, Hall	Gratitude Celebration – everyone welcome
11/12/17	2pm, Primary	Party for Juli G – everyone welcome
13/12/17	2.15pm, Preschool	Preschool End of Year Celebration & Farewells
15/12/17	12.30pm, Primary then Hall	Picnic Lunch (Byo) followed by Pre-High Farewells Last day T4
Dates for 2018		
31/01/18	9am	First day Term 1
13/04/18		Term 1 finishes
02/05/18	9am	First day Term 2
06/07/18		Term 2 finishes
01/08/18	9am	First day Term 3
28/09/18		Term 3 finishes
16/10/18	9am	First day Term 4
14/12/18		Term 4 finishes

Primary Swimming

Next week is the last swimming for Primary –children will be learning survival skills.

Please pack an extra t-shirt and shorts to be worn in the pool.



Board

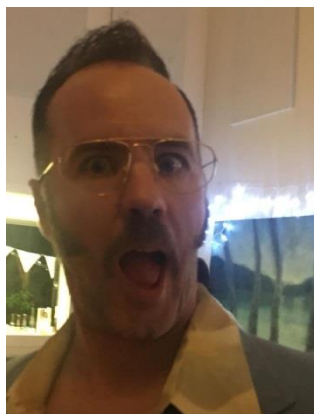
Auction Night

What an amazing effort of over \$14,000 raised at the Auction on Saturday 4th, with up to another \$1,000 that will come from the three great workshops that are filling up fast.

We have crochet, wise woman workshop and beeswax wrap making – see link here to book in <http://www.kinmafundraising.com.au/>

What a community!! A massive thank you to everyone for your amazing efforts.





Admin

Education Co-ordinator Position

Following from Juli G's beautiful letter last week letting us know that she is officially leaving Kinma at year end I wanted to share with you how we are moving forward on this position.

REPLACING JULI G for the community who have learnt and built relationship with Juli over the years you will realise that it is not possible to advertise for a replacement Juli G!

Well, we are not doing this. We are honouring the greatness and devotion that she has given over the years and will take our time to look at what we need moving into 2018 and beyond.

In discussions with the Board earlier this month I explained the importance of not rushing in to fill a void. We are in a good place within Kinma and taking our time to identify the key components for an educational leader into the future is important. A short list would include (but not be limited to) :

- Mature (not necessarily in age but life experience) and passionate educator
- Someone who generally loves kids
- A mentor for the amazing educators we currently have
- Thinks outside of the box
- A person who is a great role model
- An educator who is continually looking at possibilities in research and innovation
- Someone abreast of the new NESA requirements

And the list goes on.

While we work towards this replacement I can share a secret ... I have a direct line to Juli G at any time, so we have back up when, and if required !!

We are having a party on Monday 11th December from 2pm in the primary to celebrate Juli. Please come and join us.

New classroom in Primary

Yes it is coming

- Piers have been set, footings completed
- Concrete poured
- Brickwork has been completed (internal layer)
- Floor has been started
- Wet areas have been identified and marked
- We have changed the internals only twice so far !!!!
- Walls are being constructed as I type and will be in place within the next 7 days
- Next is windows and roof

Another gentle reminder to please not walk in the cordoned off area (big red white stripes) at the moment. The students are doing really well walking the long route up through the office and around the hall. This is only an interruption for such a small time and a very important safety measure for the School.

Kinma Care Day

Thank you to all the families that came and pruned, mulched, swept, cleaned and moved things around. It is greatly appreciated by all the staff to see the extra layers of support that you offer (even on weekends). So a big thanks you.

If you did not find the time to attend and would like a job to do in lieu of being charged please contact Admin by Wednesday next week (22nd) and we can arrange this to be completed by term end.

Carin, Julie and Claire

Education Co-ordinator

Below is Kinma's Food Handling Policy, we invite you to read it and welcome your feedback.

FOOD HANDLING POLICY

OVERVIEW

We aim for policy and practice to reflect real life.

At Kinma, learning is viewed as a continuous process. We recognise that all children from three to thirteen years are at differing stages of development, ability and understanding. Our staff grow deep and meaningful relationships with all children. This, and their knowledge of each child underpins their approach when addressing this important policy area.

IMPLEMENTATION

At Kinma we encourage hygienic practices by staff, parents and children when preparing, serving and eating food.

Preparation and serving of food

- All adults wash hands before preparing or handling food.
- Students are encouraged and reminded to wash hands prior to eating and preparing food.
- Anaphylaxis is a life threatening condition, therefore it is vital to ensure no cross contamination with food, plates and utensils occurs. Be aware of children with other allergies and food sensitivities.
- Fruit and vegetables are washed before use in food experiences.
- Perishable food is stored appropriately in a refrigerator.
- Meals from home that require reheating are stored covered in a refrigerator. Any reheated meal that isn't consumed is discarded.
- Utensils and or gloves are used when serving food.
- All kitchen surfaces, dishes, cups and utensils are kept clean. Use identified sponges and cloths for cleaning kitchen and food preparation surfaces.
- All food is stored in air tight containers. All foods will be kept covered until served.
- Refrigerators are checked regularly, and out of date and opened foods are composted, given to the chickens or discarded as appropriate. The refrigerator is cleaned regularly.

- Children do not share food that they have brought from home.
- Celebration and cooking experience food is shared with staff supervision.
- Children should remain seated while eating for safety reasons.
- In Preschool staff closely support children when in close proximity to raised temperatures
- In Primary staff support children when in close proximity to raised temperatures dependent on abilities

juli g
Education Co-ordinator

Preschool News

Welcome to these children and their families who are all busy settling in and exploring the Preschool.



Jael



Leonardo



Dan



Gabriel



Harry

JEUX DE BOULES

We were inspired by a French lesson where we saw children playing boules. In the game, we practised turn taking, waiting behind the line, aiming at the little red ball and rolling the heavy balls instead of throwing them.



EMERGENCY EVACUATION PRACTICE

We are practising what to do in the event of an emergency. We aim for all children and staff to take part in a practice. The steps are as follows.

1. A bell is rung
2. Children leave what they are doing and walk to the Preschool gate
3. From there, staff lead the children to the School Meeting Hall
4. A roll is taken to check everyone is with us

When we talked about leaving everything at Preschool “Do we even leave our lunchboxes?”



HOW DOES IT FEEL?

Keo, Sanda and Harry created comfortable, warm spaces to curl up and rest. Eli was the carer. He sang lullabies to them and found rattles and toys to play with and cloth books to look at. Role play gives children a wonderful opportunity to revisit previous experiences and imagine new ones.





Every day at Kinma Preschool, children are involved in experiences that are real and meaningful. So much effort, energy, and thought go into these activities. Whether it is putting up the sandpit cover, cutting up lettuce for the quail's meal, fixing a garden frame, hanging out the washing, choosing books at the library or cutting out photos for the floor book, making pesto, moving furniture or sweeping the deck, the children's engagement, enjoyment and learning is palpable.



WORKING IN PARTNERSHIP

Kinma Preschool has working relationships with several organisations and institution, including Macquarie University. In the last couple of years, we have had six students from Macquarie completing the practicum component of a Bachelor or Masters in Education. These interns bring new ideas and research to Preschool practice and our reflection process. Macquarie reciprocate by inviting us to professional development and consultation evenings. Staff recently attended the 2017 Trendsetters Panel and Alumni Reception entitled “Educators who inspire, engage and transform” In Term 3, we attended the Social Justice in Early Education Conference. These events keep us thinking and reflecting on our own daily practice with children and provide opportunities for all important discussion, team building and socialising.



Below is an excerpt of a letter from Macquarie University.

We would like to take this opportunity to formally thank you for your support of Macquarie University's Professional Experience Programs.

We greatly appreciate your willingness to facilitate the placement of our students at your centre/school. The teachers who assisted us and supervised our students during their professional experience placement are a valued part of our team and central to the success of the University's teacher education programs.

The quality of our programs is reliant on the contribution made by centres/schools and their staff. Without this contribution, we would not be able to provide the quality experiences on which a successful career in teaching is founded.

The University appreciates and enjoys the support it receives and we look forward to working with you in 2018. For your convenience, we have attached a copy of our invitation for next year.

Thank you once again for the time and effort you and the staff commit to our teacher education students. Their success is our collective achievement.

SNACK ATTACK



On a Wednesday lunchtime a few weeks ago the children (and teachers) were very surprised to see a large carrot had come to visit us! It was great fun and we laughed a lot. The big carrot was encouraging us to eat carrot sticks!

“Do you know that carrot just walked out of the gate?” exclaimed one of the children.

PARENT INFORMATION AFTERNOON

Thursday 23rd November at 3.15pm

We will be discussing ways in which Preschool and families can work together to benefit our children.

Everyone welcome.

WORKSHOPS

We will be having a craft workshop and a sewing workshop. If you are interested in being involved in these, please speak to Christine.



From Christine, Nina, Pat, Lizzie, Felicity and Kay

SNACK ATTACK

We are looking for parents to support Snack Attack on Wednesday 29th November.

Firstly cooking, some of which can be done at home. Then 2 or 3 people to serve and tidy up in the Primary School – say from 12 – 2pm.

Let us know if you can help.