



Inspiring a passion for learning, for life

PRIMARY • PRESCHOOL • PLAYGROUP

Term 1		
Date	Time	What's On
<i>Week 8</i>		
19/03/18	All day	Sydney Uni Students visiting
20/03/18	2.15 - 3.00pm	Last Swimming Groups 1 & 3
21/03/18	11.30am	Last Swimming Groups 2
22/03/18	3.15pm	Preschool Parent Information Session
<i>Week 9 onwards</i>		
30/03/18	No Primary or Preschool	Public Holiday - Good Friday
02/04/18	No Primary or Preschool	Public Holiday – Easter Monday
03/04/18	3.15pm	Preschool Alumni Afternoon Tea
04/04/18	1 <sup>st</sup> and 2 <sup>nd</sup> session	Tinkering *Helpers needed – contact Bea Heine
13/04/17	1.30pm	Poetry Festival
Term 2		
02/05/18		First day Term 2
06/07/18		Term 2 finishes
Term 3		
01/08/18		First day Term 3
28/09/18		Term 3 finishes
Term 4		
16/10/18		First day Term 4
14/12/18		Term 4 finishes

Two faces of the Yurt Farm Camp of 2018 – all the same – gathering, relationship, respect



# Snack Attack

Snack Attack is up and running for Term 1, and is for Primary and Preschool children. The cost per child each week for snack attack is \$5. This is for a main course and dessert, and often, seconds!

Snack Attack lunches take place on Wednesdays and are a valued part of the Kinma week. Money is collected in the classroom in Primary before lunch, and at Preschool payment is to be made at time of signing in on a Wednesday morning.

The money collected is set aside to be used for particular purchases which are important at the time, e.g. kitchen supplies. Each term a roster is prepared to ensure that there are three-four parents to hold Snack Attack each week. Parents and grandparents are encouraged to be involved in Snack Attack either by preparing a sweet or savoury dish to be sold, or by helping to prepare and serve. Meals are either prepared at home, brought in to school then heated and served, or the kitchen is open from 9am to start cooking.

The Snack Attack co-ordinator is Hayley Lewis and she is happy to support parents who wish to join in with such things as menu design and quantities required. She can be contacted at [hayleyjl@tpg.com.au](mailto:hayleyjl@tpg.com.au).

The menu is designed by those parents involved, or you can choose a Kinma favourite, with the emphasis on healthy eating. Preferred foods are natural and preservative-free where possible, e.g. homemade soups, pasta dishes, tacos, wraps and salads. Foods preferred not to be used are highly processed and refined foods i.e. chips, sweets, pies, hotdogs, sausage rolls and high sugar foods. As well as regular choices, we can offer vegetarian, gluten-free and dairy-free options.

Parents can claim all food expenses incurred by taking the money owed to them from the money collections in Primary, or by talking with Kay at Preschool.

Kinma is a nut and shell fish free school, due to severe allergies. Snack Attack will occasionally have a theme to celebrate other cultures.



# Tinkering

Ahoy hoy Kinma families!

A quick heads up that Tinkering will be returning to the Kinma shores on



**Wednesday, the 4th of April** from 9.20am-12.45pm

Please drop me a line at [beatrice@kinma.nsw.edu.au](mailto:beatrice@kinma.nsw.edu.au) if you are interested in running a pod or supporting another parent or staff member on a pod.

For those new to the Tinkering game... Tinkering is...

- A whole school activity run over two or three sessions.
- Activities are organised in "pods". Children can move between pods according to their own interest. A pod may host a handful of students or 10-15+. Teachers are on hand to support children to find an alternative pod if one is too busy and it is possible to limit the number of children visiting a pod when a lot of adult support is required, eg. cooking.
- An opportunity for children to try wide a variety of activities
- A place where children, staff and parents connect across the groups
- A learning environment where children and (adults!!!) learn by trying, changing something and trying again; asking for a hand, offering a hand; focussing in on something without distraction
- A chance to value, and benefit from, a breadth of ideas and skills in our community
- Children also offer pods and enjoy the opportunity to share their special skills and passions

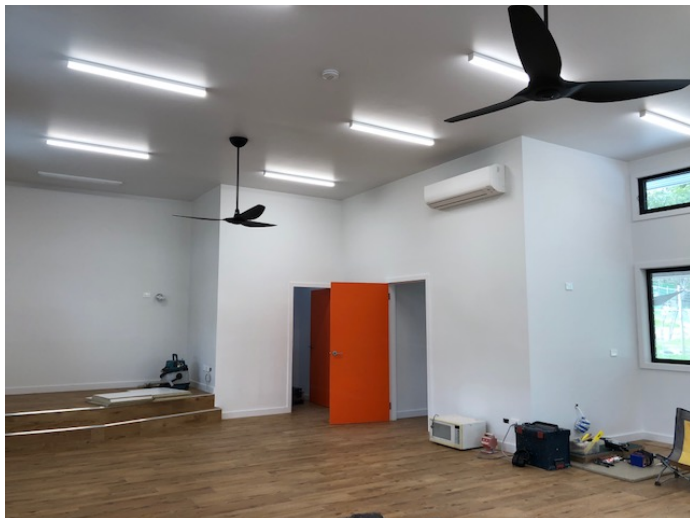
Pods that have been run with great enjoyment in the past include:

- cooking (leave the sugar at the door please!) eg. frittata, home made pasta, dumplings, vege skewers, curry...
- how does it work? sessions, eg. using cranes, pulling a part a printer, being shown around the engine of a car etc
- variety of visual art activities - eg. painting, print making, drawing with charcoal
- craft - eg. crochet, knitting, friendship bands, origami
- gardening
- challenges - eg. construction challenges, problem solving tasks,
- physical activities - soccer clinic, basketball skills, circus skills, skipping and elastics, obstacle courses
- story writing
- animal care (with live subjects!)

... these are just some ideas, we always love to refresh the mix with something new. Please don't hesitate to come and have a chat, or send an email if you would like to be involved in some way.

Many thanks,  
Beatrice

# Admin



## New classroom

A further update on the new space. We will have the building finished just as we go to holidays for this term. The children will have been visiting and sorting things out but we will officially move in term 2.

We had some beautiful sandstone delivered yesterday to make seating around the sandpit. The bookshelves and movable work stations are being dropped off as I type.

General landscaping will be done, but if you are not going away in the holidays we would love your help just to finish off. Let Claire or Julie know.

## Primary Vege Garden

We are looking to invigorate the vege garden and maybe invite our friends from New Leaf to visit. If you would like to be part can you let the office know so we can get an idea of numbers. It would be during school time.

## Term 1 Working Bee

If anyone has not received a job for this term's working bee please let Julie or Claire know by next Wednesday 21<sup>st</sup>.

## Bush Regen

A group are meeting on Good Friday for a couple of hours to continue the regeneration work on the patch of land between Preschool and Primary. If you would like to join us we will be there from 9-11am, and would love to see you.

## Supporting Students



The Link Issue 1 SEL skills.pdf

The Power of Social emotional skills. An area that we are working on all the time at Kinma. This is just a little extra info to share.

Admin Team

# GROUP 2

Hello to our Kinma community!

Here are some lovely vignettes of our learning these past two weeks...

*'Onomato' what?'*

*Onomatopoeia is word that mimics the sound of the object or action it refers to. When you pronounce a word, it will mimic its sound.*

Group 2 have some fabulous onomatopoeic words to share about what sounds may be heard in this picture...



Oooowhi

Wisha  
wisha

Chat, chat,

Drip, drop,  
drip, drop

Crunch,  
crunch

**FWACK**

Crack!

Cooooeee !

Splosh,  
splish,  
splosh,  
''''

Squark  
  
kakakakakak

## NAME POEMS!

We've also been creating name poems incorporating alliteration and onomatopoeia. We used the art of Roy Lichtenstein for inspiration.



## POETRY AND MUSIC

We had a great time learning about rhythm in poetry using percussion instruments. In groups we each practiced a verse of a poem called 'Under the Sea'. We then had to play music to accompany our verse and perform it to the rest of the class.



This term is going fast but we will be back with more Group 2 adventures in a couple of weeks.  
Deepika, Tristan and Group 2 x